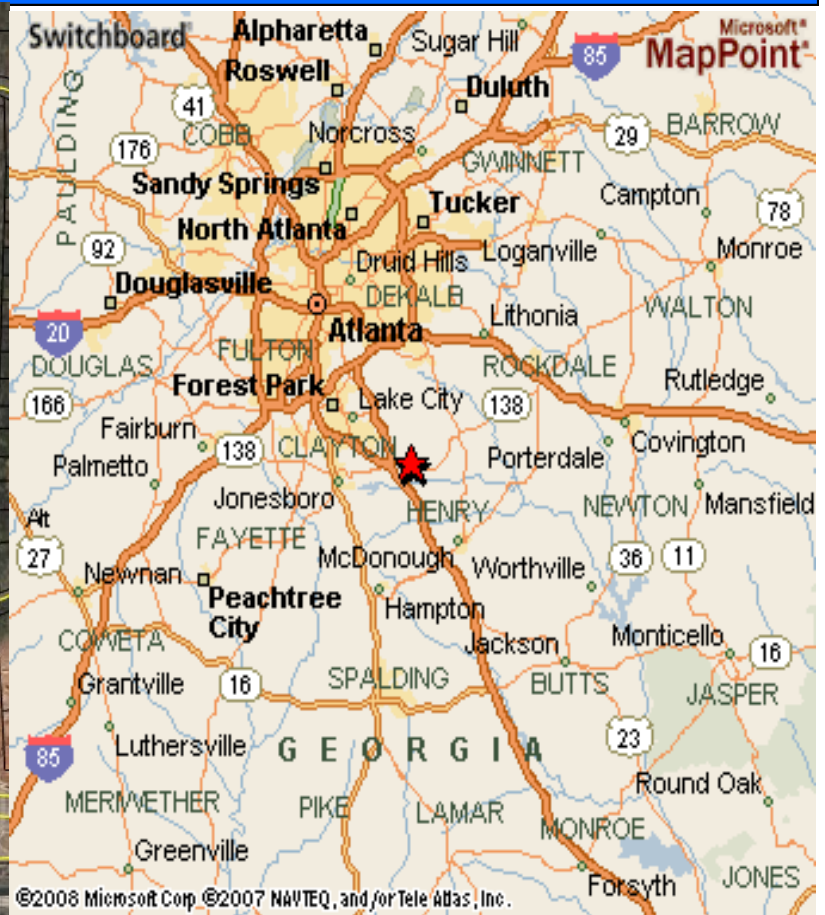


AVAILABLE FOR SALE

6.16 +/- ACRES

NW QUADRANT OF JODECO RD & PATRICK HENRY PKY

STOCKBRIDGE GA



2010	1MI	3MI	5MI
POPULATION	3,853	36,261	95,051
HOUSEHOLDS	1,329	12,682	34,190
AV. HH INCOME	\$89,258	\$83,061	\$86,493

PROPERTY HIGHLIGHTS

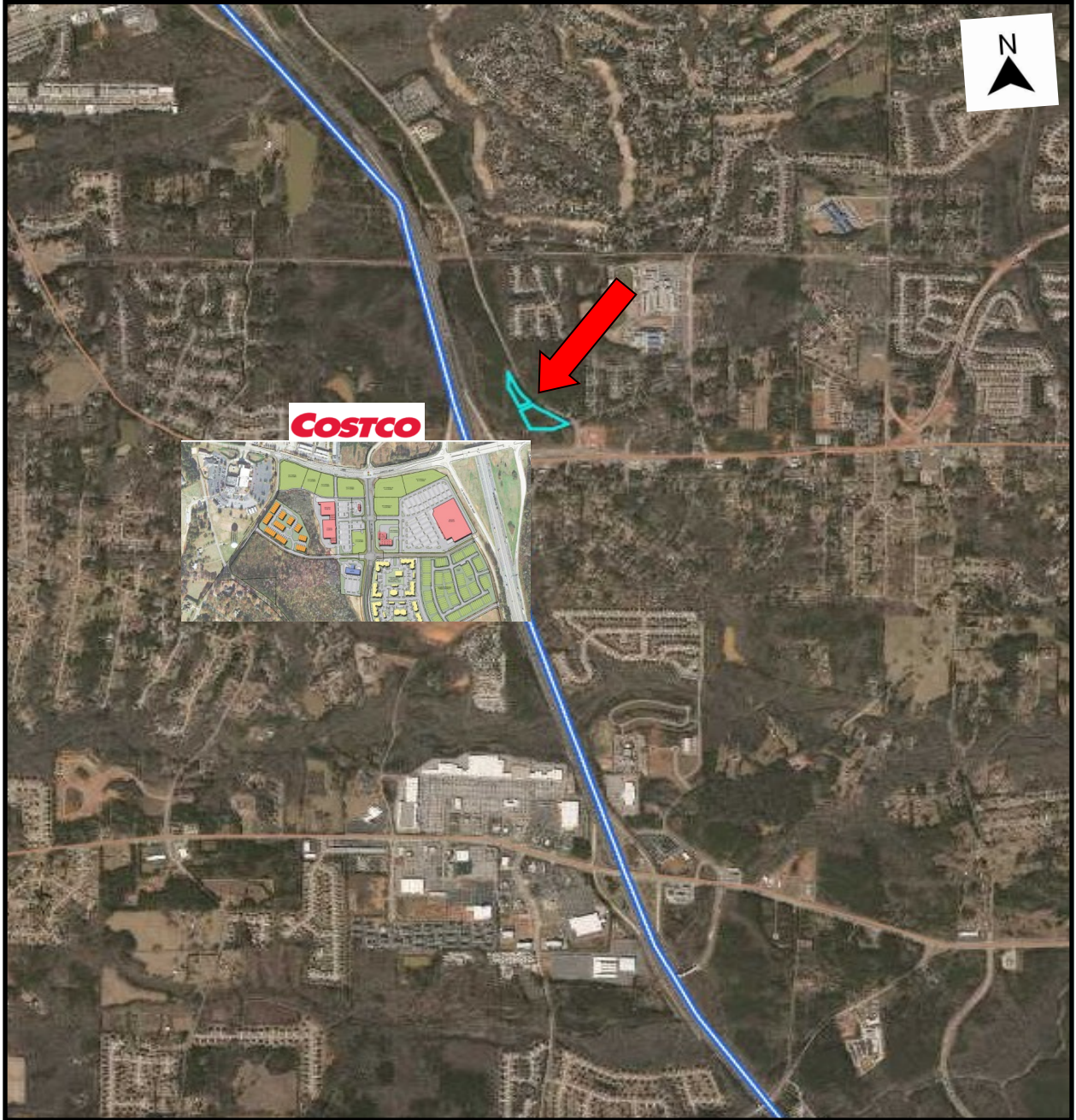
- NE QUADRANT OF JODECO RD AND I-75
- POSSIBLE ASSEMBLEDGE WITH ADDITIONAL LAND
- EXCELLENT EXPOSURE AND ACCESS
- CLOSE PROXIMET TO I-75
- CITY OF STOCKBRIDGE NO MULTI-FAMILY MORA-TORIUM CURRENTLY IN PLACE
- \$500,000/ACRE

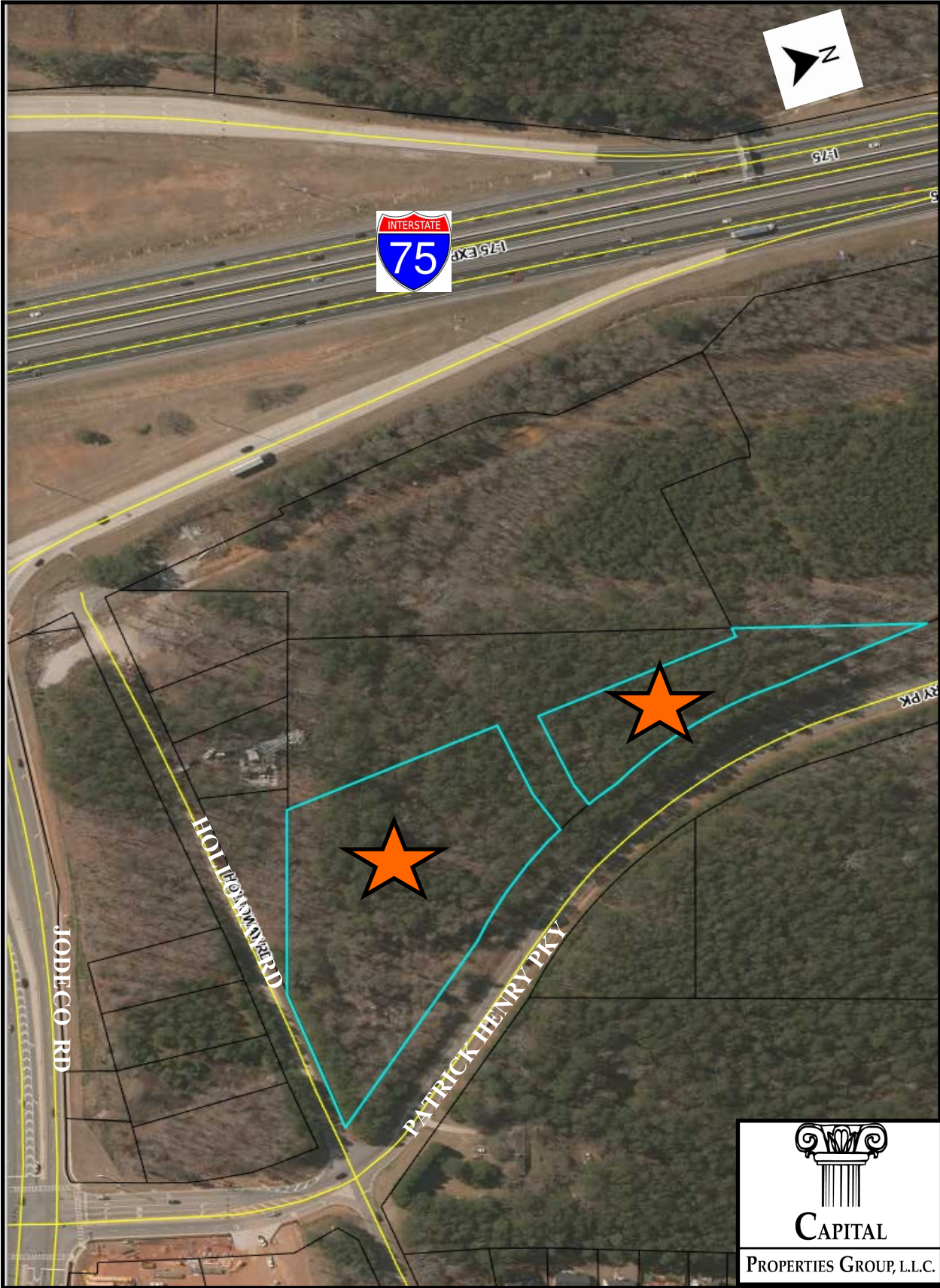
CONTACT
ED LEE
CAPITAL PROPERTIES GROUP,
L.L.C.
404-233-8450
ed@capitalpropertiesgroup.com



The information contained was obtained from sources deemed to be reliable, however Capital Properties Group has not verified the accuracy of this information and therefore makes no representations or warranties as to the it's accuracy. This information is offered subject to errors, omissions, site plan changes, lease and rental rate changes and is subject to be withdrawn or revised without notice.

6.16 ACRES
JODECO RD /HOLLOWAY DR AND PATRICK HENRY PARKWAY






CAPITAL
PROPERTIES GROUP, L.L.C.