

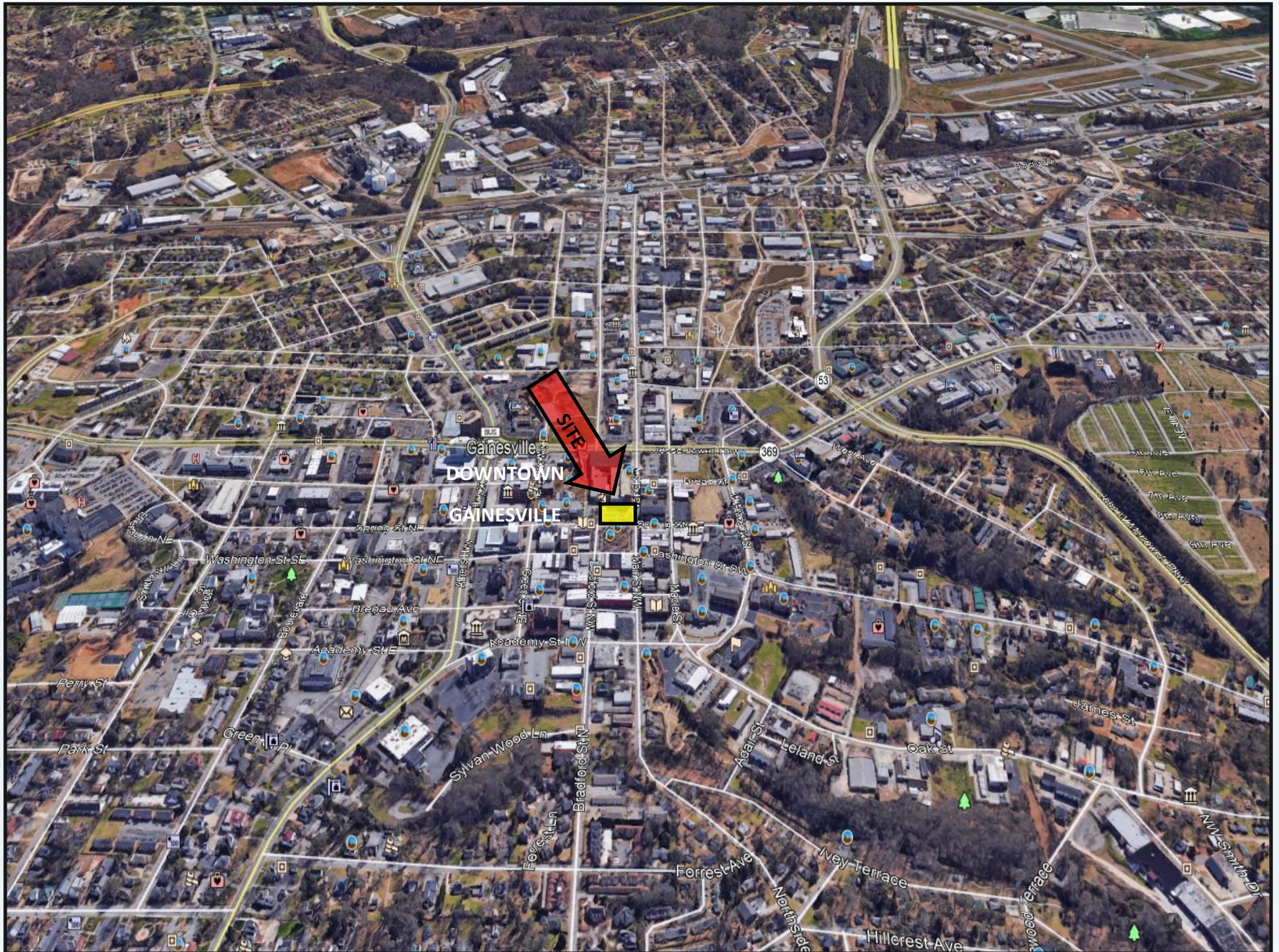
GAINESVILLE

RENAISSANCE



Gainesville Renaissance







CITY OF GAINESVILLE

CITY HALL

HALL COUNTY COURTHOUSE

PUBLIC PARKING DECK

SITE

GAINESVILLE SQUARE

DOWNTOWN GAINESVILLE, GA



On Street Parking: 1,373 Spaces | Off Street / Deck Parking: 1,222 Spaces
TOTAL DOWNTOWN PARKING: 2,595 SPACES

RESTAURANTS

1. 37 Main Restaurant
2. Sweet Magnolia's
3. Atlas Pizza
4. Innan Perk Coffee
5. Yellowfin
6. Recess Gastro Pub
7. Downtown Drafts
8. Avocados
9. Coffee Shop
10. 2 Dog
11. Schlitzsky's
12. Southern Baked Pie Co.
59. Collegiate Grill
60. Luna's Restaurant
64. Scott's Downtown
65. Rooster's Perch Coffee & Gifts
78. Danny's Donuts

RETAIL

13. Dress Up Boutique
14. Gallery on the Square
15. Horse & Hound Tack Shop
16. Sauls
17. Rahab's Rope
18. Upsy Daisy Boutique
19. Fashion Ten
20. Image Boutique
21. Princeton Salon
22. Occasions Florist
23. JR Crider
24. Hair Salon
25. Christopher's Bridal & Tuxedo
26. Wear District 101
27. The Hair Shack
28. The Nail Place
29. Gem Jewelry
30. Retail
61. Imperial Hair Salon
62. Martin Furniture & Design
66. Crystal Plate
67. Elizabeth's Clothing
68. Stork & Kids World
69. Uniform Shop
70. New Vision Tattoo
71. Serenity Massage & Day Spa
72. Gainesville Milling
77. CVS

GOVERNMENT

31. Hall County Library
32. Congressman Doug Collins
33. Parking Lot (city owned)
34. Parking Lot (city owned)
35. Future City Parking Deck
36. City Parking Deck (419 spaces)
37. 9th District Federal Court
38. Hall County Courthouse Annex
39. City of Gainesville City Hall
40. City of Gainesville Admin.
41. Chamber of Commerce
42. Courthouse Parking Deck
43. Hall County Courthouse
44. City of Gainesville Planning & Development

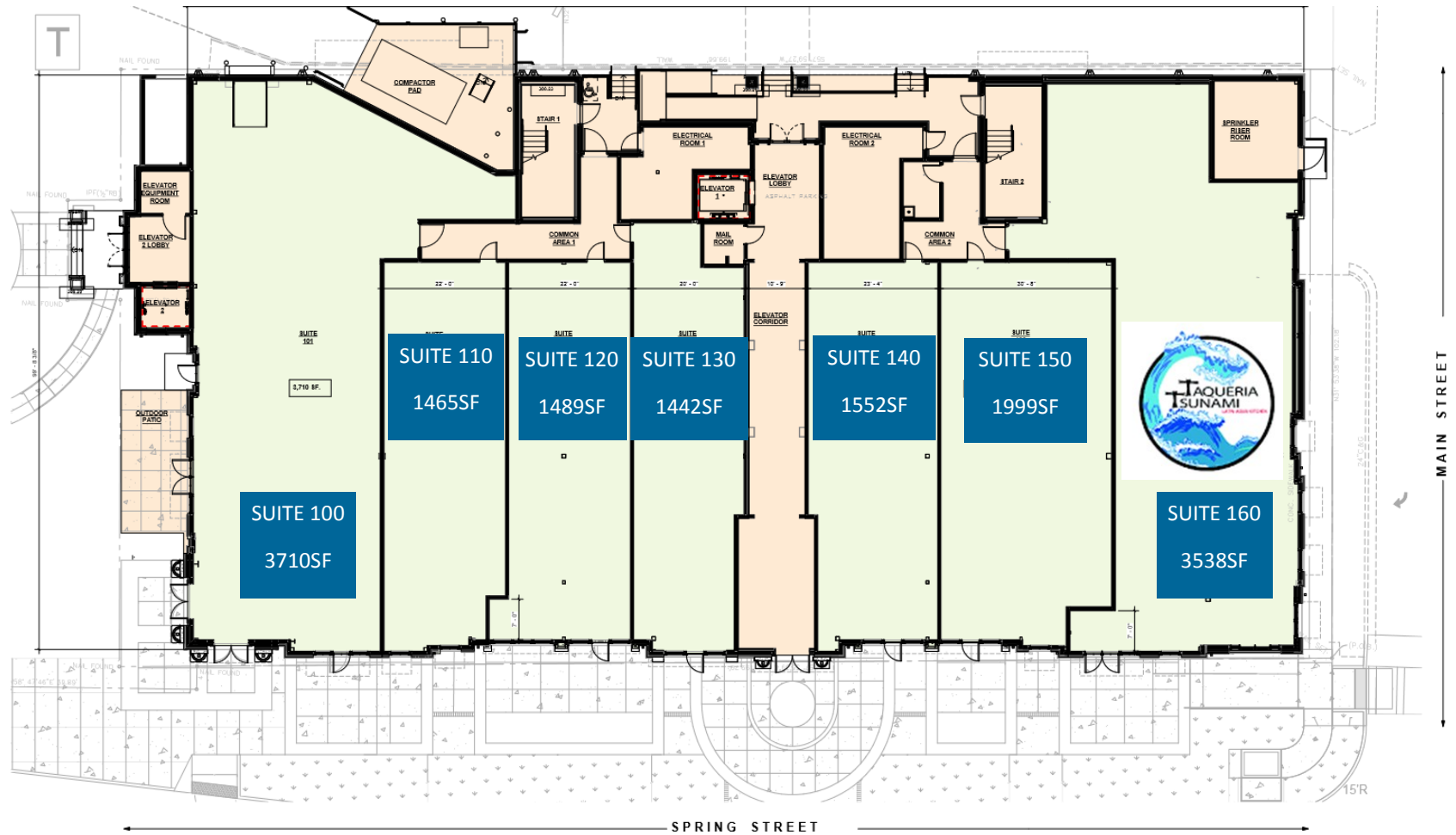
FINANCIAL & BANKING SERVICES

45. Peach State Bank & Trust
46. SunTrust Bank
47. Regions Bank
48. Regions Bank Tower
56. Homestar Financial Corporation
57. BB&T Insurance Services

OTHER

49. The Arts Council
50. Hunt Tower (100% lease)
51. 110 Main Street (for lease)
52. 104 Main Street (for lease)
53. Brenau PHD School, Physical Therapy/Pharmacy
54. Weaver Law Firm
55. Attorneys
58. Children's Center for Hope & Healing
63. Gainesville Vineyard Christian
73. St. Lukes Church
74. Masterpiece Mixers Paint & Party Studio
75. Brenau Northeast Georgia History Center
76. Apartments

FIRST FLOOR LEASING PLAN



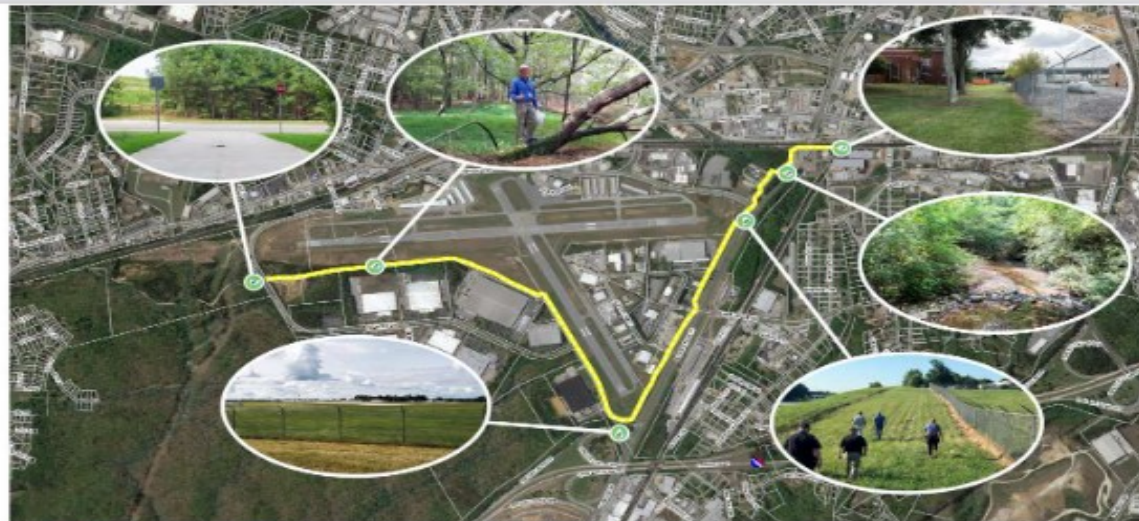




Solis Gainesville



H2i Trail Master Plan



Gainesville Connector of the Highlands to Islands Trail
Project Site Photo Key

- 1 Gainesville Connector Trail
- 2 Trail Head at Gainesville Mill
- 3 Flat Creek Crossing
- 4 View of Queen City Play
- 5 Bench at Blackberry Corner
- 6 In the Woods
- 7 Connection to Existing H2i Trail

0 1000 2000 ft
1" = 1000 ft





GAINESVILLE GA

POPULATION

192,865.00

12.5% GROWTH

MEDIAN AGE

36

MEDIAN HH INCOME

\$55,622

7.17% GROWTH

NUMBER OF EMPLOYEES

90,062

MEDIAN PROPERTY VALUE

\$171,900

POVERTY RATE

16.1%

GAINESVILLE—HALL
COUNTY, GA
PRIMARY TRADE AREA
200,000 PEOPLE

